

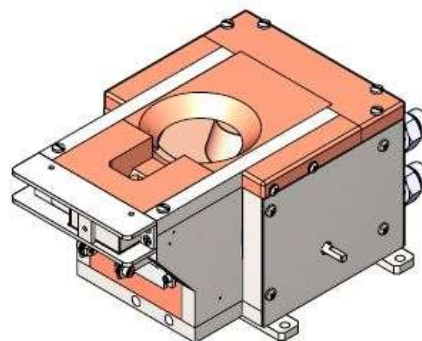
HCR Rotary Carousel 6 Kw+ e-Gun™

High Capacity Rotary Carousel Electron Beam Evaporation Series

Thermionics introduces HCR rotary carousel series e-Guns (ebeam). The High Capacity series provides enhanced beam stability and efficient XY sweep with full crucible coverage. Plug-in emitter assemblies and sweep coil assemblies make the sources easier to service. The line includes a full spectrum of power supplies, sweep controllers and accessories, including crucible liners.

Features

- True XY sweep with full crucible coverage
- UHV rated sweep coils included with source
- Enhanced beam culmination
- Plug-in emitter module
- Enhanced high stability cooling
- Cross-contamination shielding
- Rugged design
- Multiple crucibles, rotary designs
- Long life emitter assembly
- Permanent magnet beam positioning



Specifications

Operating Pressure	Below 5×10^{-5} Torr is desirable for best operation
Emission Voltage	-6 to -10 kV
Emission Current	0 to 1A
Maximum Power	10 kW
Cooling Water	3 gpm
Pressure Differential	50 psi minimum
Maximum Bakeout Temp.	230°C
Crucible Volume	302 cc

Ordering Information

Description	Model No.
302 cc Carousel HC series Rotary e-Gun, 6 kW	HCRC-06302-1
302 cc Carousel HC series Rotary e-Gun, 10 kW	HCRC-10302-1