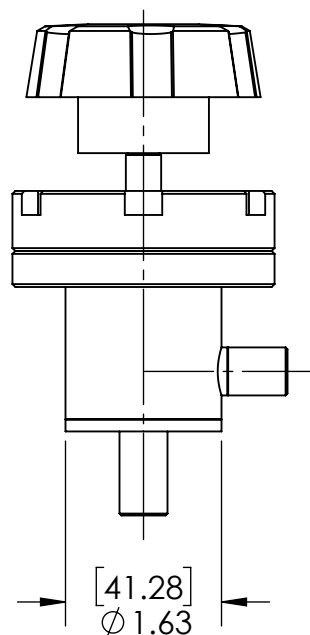
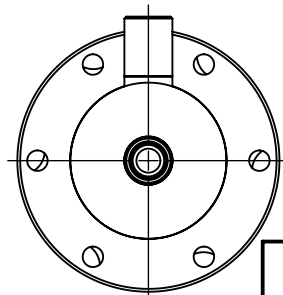
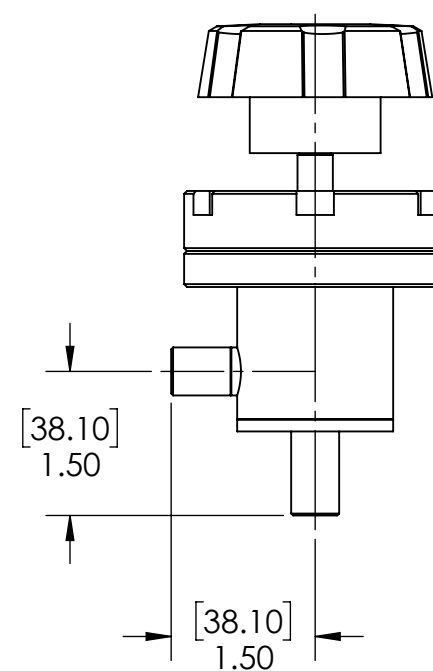
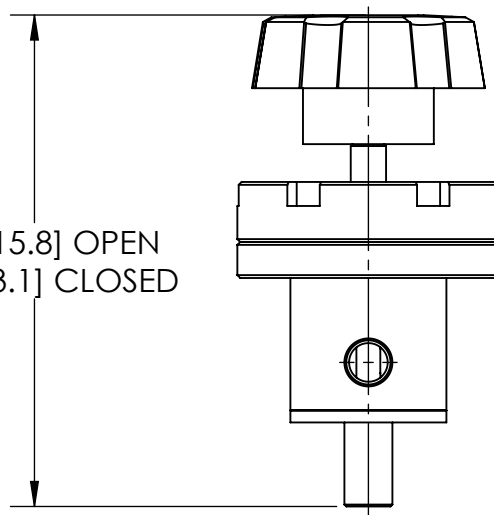


Ø 2.7
[69.3]



4.6 [115.8] OPEN
4.1 [103.1] CLOSED



SPECIFICATIONS:

*PORT: Ø 1/2" TUBE

*MATERIALS:

BODY: 304 SST, ELECTROPOLISHED

BELLOWS: WELDED AM-350 SST

BONNET SEAL: COPPER

POPPET SEAL: VITON

OTHER MATERIALS AVAILABLE

ACTUATION: SELF-LUBRICATING BRONZE NUTS

WITH ACME THREADS

DIFFERENTIAL PRESSURE: MAXIMUM 20 PSIA ACROSS VALVE SEAT

MAXIMUM TEMPERATURE VITON SEALS:

SUSTAINED: ≤150°C [302°F]

INTERMITTENT: ≤ 204°C [399°F]


VACUUM RANGE: METAL BONNET SEAL: ≥ 1x10⁻¹⁰ TORR HIGH VACUUM

OPTIONS: FITTINGS AND O-RINGS

NOTES:

- ALL WELDS TO BE VAC. TIGHT TO 2x10⁻¹⁰ MIN. SENSITIVITY.
- DIMENSIONS IN [X.XX] ARE IN mm.

PROPRIETARY AND CONFIDENTIAL
THE INFORMATION CONTAINED IN THIS
DRAWING IS THE SOLE PROPERTY OF
THERMIONICS LABORATORY INC. ANY
REPRODUCTION IN PART OR AS A WHOLE
WITHOUT THE WRITTEN PERMISSION OF
THERMIONICS LABORATORY INC. IS
PROHIBITED.

DIMENSIONS ARE IN INCHES TOLERANCES: FRACTIONAL ± N/A ANGULAR: MACH ± BEND ± 5° ONE PLACE DECIMAL ± .1 TWO PLACE DECIMAL ± .01 THREE PLACE DECIMAL ± .005 SURFACE FINISH 63 R.M.S.				FINISH:				DO NOT SCALE DRAWING		REVISION	
								<i>thermionics laboratory inc.</i> <i>Hayward Ca. 94545</i>			
		NAME	SIGNATURE		DATE		USED ON	NEXT ASSY.		TITLE:	
DESIGN/ENG.								GEN. USE		<i>ANGLE VALVE, RIGHT ANGLE, COPPER BONNET SEAL, MANUAL ACTUATION</i>	
CHK'D											
APPV'D											
MFG											
Q.A						MATERIAL:		DWG NO.		A3	
								MA-500-H			
						WEIGHT:		SCALE:1:2		SHEET 1 OF 1	